

# Tea Time Tour

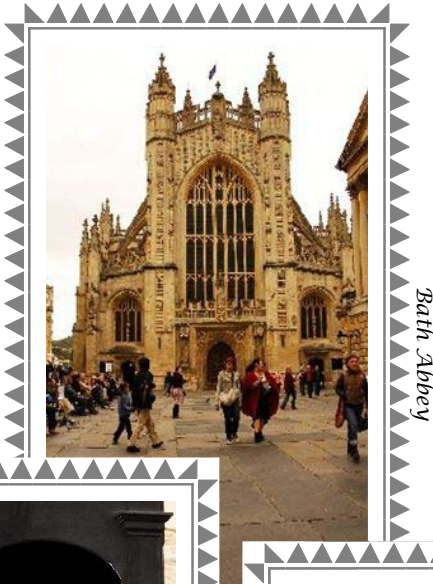


FRANCE BY DESIGN, LLC

## London & Bath, England

Created

By  
Kristi Wetzel  
France by Design



*Bath Abbey*



*Guard at the Tower of London*



*Bath signpost, City Center*

Photos by Patricia Cheek

September 3 – 12,  
2007  
(10 days, 8 nights)

Land Only Tour Package

## Dear Travel Enthusiast,

*New inspirations are waiting for you this fall in the delightful country of England!*

- **Shop** in chic London boutiques.
- **Savor** tea in quaint tea rooms.
- **Relax** in elegant surroundings.
- **Meet** tea and pastry experts.
- **Tour** the Queen's official residences in London and Windsor.

*Kristi Wetzel, president of France by Design, LLC, welcomes you to join her and other tour enthusiasts for this delightful one-of-a-kind "Tea Time" excursion. With over a decade in the specialty travel planning business, Kristi's professional experience will pave the way for you to discover more about the British people and their culture. This land package tour offers a high degree of personalized attention in very comfortable surroundings for the discerning traveler. You will have numerous opportunities to "sample" Britain's history as well as its teas and pastries in London, Bath, Bradford-on-Avon, and Windsor. Best of all, you will have two fascinating opportunities to participate in educational classes taught by experts in London and Bath. You will undoubtedly gain a new perspective of all that goes into creating a proper tea!*

*Here is your chance to treat yourself to the best of Britain in the best of seasons! The tour application deadline is April 14, 2007. Looking forward to hearing from you soon!*



*Cheers!*

*Kristi Wetzel  
President  
France by Design, LLC*

Kristi Wetzel  
France by Design, LLC  
Phone: (864) 298-0004

Tour Director  
Fax: (864) 335-8221

## ITINERARY

### Monday, September 3 – DEPARTURE FROM USA

### Tuesday, September 4 - LONDON

**Cheers!** Arrive at **London Gatwick** airport. Collect your luggage and make your own way to the **Knightsbridge Green Hotel** in London. Once there, you will be able to relax with a cup of tea while you wait for your room to become available for **check-in at 1 PM**. The hotel will be able to look after your luggage for you if you wish to head out into the city before check-in time. After a couple of hours to rest, our group will walk over to the nearby famous **Harrods** store. Here you will enjoy your first afternoon tea in Great Britain at the fabulous **Georgian Restaurant** on the fourth floor. This tea will include finger sandwiches, patisserie, scones and clotted cream. You may shop at your leisure after tea time. Your evening and dinner plans are up to you. A good night's rest will have you feeling ready-to-go tomorrow morning! **Afternoon Tea is included.**

### Wednesday, September 5 - LONDON

Following breakfast, meet your private driver and board the mini-coach for a **half-day orientation tour of the capital with a Blue Badge Guide**. Included in this sightseeing tour will be guided visits to **Westminster Abbey** and the **Tower of London**. After an independent lunch, our group will meet for our timed-entry visit to the official London residence of the Queen, **Buckingham Palace**. This is a self-guided tour of the State Rooms. The rest of the afternoon and evening is at your leisure. Enjoy exploring museums and famous sites. Absorb the beauty of London's lights at night. Dinner is on your own. **Breakfast is included.**

### Thursday, September 6 - BATH

After checking out of the hotel this morning, our group will have a transfer provided to the rail station for the 1 ½ hour train trip to Bath. ( It will be possible for you to leave a small amount of luggage, no valuables please, at The Knightsbridge Green Hotel if you wish to travel a bit lighter. They will store these items in the hotel's basement storage room until our group's return on September 9.) Arrive in Bath near lunchtime where our group will be transferred to the **Bath Spa Hotel**. After check-in, our group will go to the center of historic Bath and take time for an independent lunch. Our group will reconvene for a self-guided tour of the famous **Roman Baths** this afternoon. The rest of the day is free. Bath is an ideal small city to explore on foot. There are numerous shops, restaurants, and fascinating museums to visit. **Breakfast is included.**



Photos by Patricia Cheek

### Friday, September 7 - BATH

Today our group will take taxis to **The Bertinet Kitchen** where we will enjoy a **featured tour highlight:** a half-day, privately-arranged **pastry masterclass** with **French chef and baker Richard Bertinet**. Our pastry instructor is also the author of a cookbook entitled "Dough – Simple Contemporary Bread" which received numerous awards in 2006. This hands-on pastry-making session will cover both sweet and savory pastry as well as the possibility of scones and/or Bath buns. This special day will conclude with **high tea** at 5 PM. This evening is at your leisure. It's possible to sign up in advance for an **optional walking tour** of the city. The tour will give a general historical and architectural introduction to the city and will last around 2 hours. **Breakfast and high tea are included.**



Photos Courtesy of  
The Bertinet Kitchen

### Saturday, September 8 - BATH

After a leisurely morning, the group will take a local bus or train to nearby **Bradford-on-Avon**. We will then make our way over to **The Bridge Tea Rooms** featured in the book "The Great Tea Rooms of Britain" by Bruce Richardson. After enjoying a delicious tour-provided lunch together, take time on your own to explore the town and shop. Our group will reconvene at a scheduled time for the trip back to Bath. Tonight, an **optional dinner** can be arranged for anyone who is interested. **Breakfast and a tea room lunch are included.**

### Sunday, September 9 - LONDON

Our group checks out of the Bath Spa Hotel this morning and arrives at the Bath rail station by pre-arranged transfer. Upon arrival in London, another pre-arranged transfer will take us directly to **The Knightsbridge Green Hotel** for check-in after 1 PM. This afternoon, you may enjoy a couple of hours of independent sightseeing and shopping. For anyone who is interested, you can hop on the subway and go for an **optional visit to the well-known Fortnum & Mason tea emporium**. Their food hall is open on Sunday as well as their tea room and restaurant. **Breakfast is included.**

**Exciting optional activity: early evening tea plus theater.** You may sign up in advance for "theater tea" at a fine London hotel and a ticket for an evening performance of the "Mary Poppins" musical at the **Prince Edward Theater**. The cost for this unforgettable evening is \$190 USD per person.

### Monday, September 10 - LONDON

Today our group will take a subway ride in the direction of **The Chesterfield Hotel** where we have another **featured tour highlight: a full day tea masterclass** with well-known tea consultant, speaker, and author, **Jane Pettigrew** and her colleague, **Tim Clifton**. Mr. Clifton is also an internationally known tea consultant and tea taster. The two of them will use a variety of color images and video footage as they cover the topics such as the **history of tea in Britain, the manufacture of different types of teas, the "journey" of tea from the plantation to your teacup, how to brew the perfect cup of tea, and a discussion about tea and health.** In addition to tea available throughout the day, our group will enjoy a buffet lunch together. At the end of the seminar, our group will be served a fine afternoon tea with scones, strawberry jam and clotted cream, and a selection of pastries. Each group member in attendance will receive a copy of Ms. Pettigrew's book, "The Tea Lover's Companion" and a Tea Master's certificate. The evening is at leisure. **Breakfast, buffet lunch, and afternoon tea are included.**

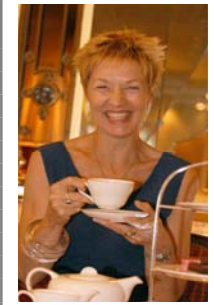


Photo Courtesy of Tea Masters

### Tuesday, September 11 - LONDON

This morning, our group will take a subway ride to the rail station for our **train excursion to Windsor**. There will be a group visit and self-guided tour of **Windsor Castle**. Please note that the Queen's presence may have some effect on where the group is allowed to tour. There will be time to explore the town of Windsor independently for a couple of hours. Our group will meet at the **Crooked House Tea Room** for the final "tea time" in Great Britain. At the conclusion of our group tea, we will walk back to the train station for our journey back to London. Upon return at the London rail station, you may choose to continue with some last minute exploring and shopping or go back toward the hotel. This is our group's last evening in London -- enjoy these last moments to dine, shop, or see one more famous site. **Breakfast and final afternoon tea are included.**

### Wednesday, September 12- RETURN TO USA

Check out of the hotel for your morning transfer to the **London Gatwick** airport. How rewarding it will be to share stories and souvenirs with friends and family back home! **Breakfast is included.**

**LAND ONLY PACKAGE — Cost Description based on Two Factors:**

- Double Occupancy
- A Minimum of 12 Tour Participants

The minimum number of participants does not include Kristi Wetzel, tour director.

The maximum number of participants for this tour is 15 persons, excluding Kristi Wetzel, tour director.

**DESCRIPTION OF PAYMENTS:**

**1<sup>st</sup> PAYMENT** – This is your initial tour deposit which secures your spot on the tour. Your trip deposit is NONREFUNDABLE. Vacation trip insurance is highly recommended. Trip insurance companies generally recommend that you obtain vacation insurance coverage at the time of your initial tour deposit. For more information, please contact France by Design, LLC at 1-866-535-7702.

**2<sup>nd</sup> PAYMENT** – This is your balance due payment which completes your purchase of this land tour package. Please refer to the payment schedule below for details concerning the amount due for your final payment. Please refer to the responsibility clause for details concerning trip cancellation and refund policies.

**PLEASE NOTE:** There is the opportunity for an optional theater tea at a fine hotel in London that is packaged with the evening musical event “Mary Poppins” on Sunday, September 9, 2007. The extra charge for this special theater tea and evening performance is **\$190 USD per person**. **Payment for this option is due at the time of the second payment on May 26, 2007.**

There is also the opportunity for an optional walking tour in Bath as well as a group dinner in Bath to mark the last night in town. **As a tour participant, you will be notified in writing at a later date concerning the cost and payment details for these extra options.**

**SCHEDULE OF PAYMENTS:****1<sup>st</sup> PAYMENT – OPTION A or OPTION B****OPTION A: “EARLY BIRD”**MARCH 24, 2007**AMOUNT DUE: \$400 USD per person**

This is the “early bird” deposit deadline which reflects a \$100 USD discount off the regular deposit fee of \$500 USD. Your first payment is called a trip deposit. To obtain the described discount, your check must be received by France by Design, LLC ON or BEFORE March 24, 2007. \*Please note that your deposit fee is NONREFUNDABLE. Travel insurance protection is HIGHLY recommended and is available through France by Design, LLC.

**OPTION B:**April 14, 2007**AMOUNT DUE: \$500 USD per person**

This is the deposit deadline if you do not select OPTION A. Your first payment is called a trip deposit. Your check must be received by France by Design, LLC ON or BEFORE April 14, 2007. \*Please note that your deposit fee is NONREFUNDABLE. Travel insurance protection is HIGHLY recommended and is available through France by Design, LLC.

**2<sup>nd</sup> & FINAL PAYMENT**MAY 26, 2007**AMOUNT DUE**

Double occupancy rate:

balance due is \$3650 USD per person

Single occupancy rate:

balance due is \$4300 USD per person

“Theater Tea” + Theater:

optional extra is \$190 USD per person

Your total balance due payment completes the purchase of this land tour package.

Your payment by check must be received by France by Design, LLC no later than May 26, 2007. France by Design, LLC will charge a \$100 late fee for any balance due payment not received by the described 2<sup>nd</sup> payment deadline. Please refer to the responsibility clause for details concerning cancellation and refund policies. Please understand that vacation travel insurance is highly recommended. If you have not already purchased trip insurance by the date of your 2<sup>nd</sup> payment, you may still want to contact France by Design, LLC at 1-866-535-7702 for more information.

**PAYMENT INSTRUCTIONS:**

Please use the payment forms included in this brochure when you mail your first and second trip payments. Your tour deposit and your tour balance must be paid by check to

“France by Design, LLC”

**Complete contact information:**

**Payment Address:**

**France by Design, LLC**  
**3223-D North Pleasantburg Drive, Box 135**  
**Greenville, SC 29609**

Kristi Wetzel , President  
 France by Design, LLC  
 Toll-free: 1-866-535-7702  
 Phone: (864) 298-0004  
 Fax: (864) 335-8221  
 Email: kristi@francebydesign.com

**WHAT'S INCLUDED:****Lodging:**

**5 nights at a 4-star hotel in London** (pre-selected the Knightsbridge Green Hotel.) Double-occupancy twin suite rooms. Breakfast is to be served directly to your room.

**3 nights at a 4-star hotel in Bath** (pre-selected the Bath Spa Hotel.) Double-occupancy standard twin rooms. Breakfast is served in the designated dining area.

**NOTE:** Pre-selected hotels cannot be guaranteed until the tour deposit fee has been received.

**Meals:**

**7 full breakfasts – menu is to include some type of eggs &/or meat (09/05 – 09/11)**

**1 express breakfast (9/12)**

**6 other meals: (combination of 2 lunches and 4 teas)**

1. Afternoon tea at the Georgian Restaurant at Harrods in London on 09/04/07
2. Afternoon tea with Chef Richard Bertinet at The Bertinet Kitchen in Bath on 09/07/07
3. Lunch at The Bridge Tea Rooms in Bradford-on-Avon on 09/08/07
4. Buffet lunch with tea experts Jane Pettigrew & Tim Clifton at The Chesterfield Hotel in London on 09/10/07
5. Afternoon tea with tea experts Jane Pettigrew & Tim Clifton at The Chesterfield Hotel in London on 09/10/07
6. Afternoon tea at The Crooked House Tea Rooms in Windsor on 09/11/07

**NOTE:** There is the opportunity for an optional theater tea at a fine hotel in London that is packaged with the evening musical event “Mary Poppins” on Sunday, September 9, 2007. The **extra charge** for this special theater tea and evening performance is **\$190 USD per person**. Payment for this option is due at the time of the second payment on May 26, 2007. There is also the opportunity for an optional walking tour in Bath as well as a group dinner in Bath to mark the last night in town. As a tour participant you will be notified in writing at a later date concerning the cost and payment details for these extra options in Bath.

**Sightseeing:**

**Westminster Abbey** – guided visit on September 5, 2007

**Tower of London** – guided visit on September 5, 2007

**State Rooms at Buckingham Palace** – group visit/self-guided – September 5, 2007

**Roman Baths** – group visit/self-guided – September 6, 2007

**Windsor Castle** – group visit/self-guided – September 11, 2007

\*A half-day private-guided orientation tour of London in mini-coach with a Blue Badge Guide is included on the morning of September 5, 2007.

**Other inclusions:**

VAT and service for included lodging, meals, and sightseeing & activities. All trip expenses for tour planner & director Kristi Wetzel of France by Design, LLC.

**Special Feature Highlights:**

**Half-day pastry masterclass** with French Chef Richard Bertinet of The Bertinet Kitchen in Bath, England on September 7, 2007. This hands-on pastry making session will cover both sweet and savory pastry as well as the possibility of scones and/or Bath buns. This special day will conclude with a high tea at 5 PM.

**Full-day tea masterclass** on September 10, 2007 with tea consultant & tea author, Jane Pettigrew and international tea consultant & tea taster, Tim Clifton. This seminar will be conducted at The Chesterfield Hotel in London where we will also enjoy a buffet lunch, tea throughout the day, and an afternoon tea finale. Each masterclass participant will receive a copy of Jane's book entitled “Tea Lover's Companion” as well as a Tea Master's certificate.

**Transportation:**

A 16-seater mini-coach will be used for private transfer to London Gatwick airport on September 12, 2007. Mini-coach transportation will also be used for our half-day of private-guided sightseeing in London on September 5, 2007. Other included transfers are on September 6 and September 9 when we are en route with luggage.

**Taxis, local buses, and subway rides:**

A combination of both taxis and subway rides will be used to arrive at locations where our group has an activity that is included in the London itinerary. The exception to this is when the location of the group activity is within walking distance of either the hotel or the train station. Whether in London, Bath, Bradford-on-Avon, or Windsor, there will be occasions when the group will go to an included activity on foot. Good walking shoes are very important. The selection of which mode of transportation is appropriate will be up to the discretion of your tour director, Kristi Wetzel. The group's transportation to included activities in Bath will involve the use of either local taxis and/or buses as well as occasions when the group walks together to locations within walking distance.

**Travel by train:**

**Whenever possible, 1<sup>st</sup> class rail tickets\* will be used for journeys to the following destinations:**

- London to Bath on September 6, 2007
- Day trip from Bath to Bradford-on-Avon on September 8, 2007 (It's also possible that we may consider riding a local bus to Bradford and back.)
- Bath to London on September 9, 2007
- Day trip from London to Windsor on September 11, 2007

**NOTE:** \*First class rail travel in the UK cannot be guaranteed. Certain routes do not offer first class seating. Occasionally, even in situations where first class is scheduled as available, due to changes in locomotives and schedules, the proposed first class travel is subject to change. Please understand that these are matters that are beyond the control of any tour planner/manager/director and we will have to adapt accordingly.

**WHAT'S NOT INCLUDED:**

- Airfare — Please inquire for details concerning which airport to select for your UK arrival and departure. Transfer on day of departure, September 12, will be to London-Gatwick **ONLY**
- Tips or gratuities for guides
- Any meals, drinks, refreshments that are not specifically included in the trip itinerary and the original trip cost.
- Any incidental expenses of a personal nature such as phone calls, dry cleaning, internet usage, etc, but not limited to these examples.
- Tickets and transportation for sightseeing or entertainment which are not specifically included in the group's itinerary.

**Please note:** France by Design, LLC cannot reimburse any individuals for situations that may cause them to miss riding with the group on a bus, train, or taxi if they are not present at the scheduled time and place of departure for the group's next activity on the itinerary. This includes but is not limited to situations that are beyond their control. France by Design, LLC cannot reimburse individuals who choose to miss a planned activity or event. France by Design, LLC cannot reimburse anyone for a missed activity or event due to illness. Illness and/or injury are two good reasons for procuring vacation insurance coverage. Trip vacation insurance is highly recommended. For more information concerning vacation insurance coverage, please contact France by Design, LLC at 1-866-535-7702.

**One other note on extra information and opportunities:**

Upon arrival in London, you will be given local maps and a list of popular museums and sights with some information concerning how to locate them during your independent sightseeing opportunities. You will also receive helpful touring information for the other destinations in our itinerary: Bath, Bradford-on-Avon, and Windsor. During the tour, you will receive suggestions for places to eat for your independent lunches and dinners. Optional sightseeing and entertainment opportunities are noted in your trip itinerary.

---

## FRANCE BY DESIGN, LLC

### TERMS AND CONDITIONS

**Passports and Visas**

A valid passport is required for all tour participants regardless of nationality. The securing of a passport and all necessary visas, if necessary, is the responsibility of the individual traveler. Non US citizens are advised to consult with the British Consulate to ascertain whether visas are necessary. France by Design, LLC will not be responsible for problems arising where a tour participant has failed to obtain and present any official documents necessary for this international trip. France by Design, LLC requires that you submit proof of your passport by submitting your passport number and other pertinent passport details, and, if required, visa details as well. Each tour participant must submit this information to France by Design, LLC in writing **NO LATER THAN JULY 31, 2007.**

**PLEASE NOTE:** It is very important that you double check the airline company's spelling of your legal name the way it appears or will appear on your passport. If the name on your airline ticket does not exactly match the way your name is spelled in your passport, you will be responsible for any problems that ensue, and you must be aware that such an error could jeopardize your ability to board the flight. It is also very important to be sure that your passport is updated with your current name if you have been recently married or divorced. It is important to check the validity of your passport. If you will have less than 6 months validity on your current passport at the time of this tour, then you will need to get your passport renewed in time for the dates of travel of this tour.

**Young tour members**

Young tour members under the age of 18 must be accompanied by at least one adult. Children under the age of 12 are not eligible for participation on this tour.

**Baggage**

The baggage allowance per person is **one medium-size suitcase and one airline approved-size carry-on bag.** This limit must be STRICTLY observed as it is the basis for the selected vehicles needed for pre-arranged transfers. (If this allotment is exceeded against the counsel provided in this document, then the tour participant will thereby agree to be responsible to pay any additional portage and, if necessary, pay for separate vehicle transfer fees.) **Tour participants are requested to respect the described baggage limit.** Each tour participant is also advised to check her respective airline companies' policies regarding checked and carry-on luggage. Please note that each tour participant must be responsible for managing his/her own baggage at airports and rail stations. This may include the possibility of carrying baggage up and down stairs when there are no elevators or escalators.

---

## FRANCE BY DESIGN, LLC

### TERMS AND CONDITIONS (cont'd)

#### Tour Payments

A nonrefundable deposit of \$500 is due with a completed trip application form by April 14, 2007. If you select Option A on the tour deposit/1st payment form, your deposit amount will be \$400 USD and it must be received on or before March 24, 2007. The balance is due by May 26, 2007 for both options A and B. Please refer to the detailed explanation of deposit payments and final balance due payments under the PAYMENT DESCRIPTION and PAYMENT SCHEDULE headings.

#### About Itinerary & Costs

The pricing of this LAND ONLY tour is contingent upon a minimum number of 12 tour participants. Individual cancellations may necessitate an adjustment in the per person tour cost. While every effort will be made to carry out the itinerary as planned, it is subject to modification and change by France by Design, LLC and the travel suppliers and special guests who are part of this tour's exclusively designed itinerary. While we will do everything to maintain the listed price, it is subject to change if there are changes in the economy that weaken the US dollar's value in Great Britain. If it is necessary to increase the cost of the tour per person for these reasons, then notification of this change and subsequent surcharge will be given in writing by August 1, 2007. In such a case, the surcharge will be payable to France by Design, LLC by August 15, 2007.

#### Insurance

Vacation travel insurance is NOT included. It may be purchased for an additional cost per person. Please contact France by Design, LLC at 1-866-535-7702 for more information. The best time to purchase trip insurance is **IMMEDIATELY** after purchasing an airline ticket and/or after making your initial trip deposit. It is important to total your trip costs correctly before insuring your trip. Please be sure to factor in your purchase of a nonrefundable international airline ticket, which is not included in this land tour package, as well as for the cost of this "tea time" land only package tour.

#### Cancellation Policy

If France by Design, LLC must cancel this land only tour package for a lack of a minimum number of participants, you will be notified in writing no later than June 1, 2007. Tour participants are responsible for any risk taken by the purchase of airline tickets to and from the destination of this land tour. It is the tour participants' responsibility to understand the terms and conditions of the airline company from whom their respective airline tickets are purchased. If the tour would have to be cancelled for this reason, your deposit for this land only tour package will be entirely refunded as well as all of your paid tour balance.

**PLEASE NOTE:** France by Design, LLC is not responsible for any costs associated with the procurement of a valid passport and/or visas. Tour participants agree to accept responsibility for any and all such fees. France by Design, LLC does not accept any liability for any airline cancellation penalty incurred by the purchase of a nonrefundable round trip ticket from your city of departure to the tour destination.

Under conditions in which the passenger is not at fault for the cancellation of this land only tour package, and has not canceled in violation of any terms and conditions previously clearly and conspicuously disclosed and agreed to by the passenger, all sums paid to this seller of travel for services not provided will be promptly paid to the passenger, unless the passenger advises the seller of travel in writing, after cancellation. This provision does not apply where the seller of travel has remitted the payment to another registered wholesale seller of travel or carrier, without obtaining a refund, and where the wholesaler or provider defaults in providing the agreed-upon transportation or service. In this situation, the seller of travel must provide the passenger with a written statement accompanied by bank records establishing the disbursement of the payment, and if disbursed to a wholesale seller of travel, proof of current registration of that wholesaler.

#### Cancellation Charges

Individual cancellation penalties apply as follows:

**Cancellation ON or before May 26, 2007:** loss of your deposit payment

If you paid according to the conditions of Option A, your nonrefundable deposit is \$400 USD.

If you paid according to the conditions of Option B, your nonrefundable deposit is \$500 USD.

**Cancellation between May 27, 2007 – July 31, 2007:** loss of deposit + 30% of tour cost.

**Cancellation between August 1 – September 3, 2007:** loss of 100% of the tour cost.

#### Trip Delay or Trip Interruption:

No refunds will be given for any unused portions of this packaged land tour, including but not limited to, missed meals, missed transfers, hotel nights and sightseeing. Vacation travel insurance is highly recommended. Please call France by Design, LLC at 1-866-535-7702 for more information.

## FRANCE BY DESIGN, LLC

### Health recommendations

For complete medical information about vaccines, diseases, etc. for the country you are visiting, call your county health department and/or physician. To access the website for the Center of Disease Control, go to [www.cdc.gov/travel](http://www.cdc.gov/travel). Any tour participant on prescription medication should visit the following website at [www.customs.gov](http://www.customs.gov) for more information concerning recommendations and requirements in place for anyone traveling with prescription medications. Some medications may require a notarized letter on your physician's letterhead listing your medications and reason for taking them.

To enjoy this trip to the fullest, you should be in good physical and mental health. Any physical condition that requires special diets, treatments, and medical attention must be reported in writing at the time your reservation is completed and tour deposit is paid. If you have any doubt concerning your ability to meet the physical requirements of walking, using stairways, and being responsible for managing your luggage while in airports and train stations, please check with your physician before making your first land tour payment. France by Design, LLC reserves the right to decline, accept, or retain any tour participant whose health, mental condition, physical infirmity, or attitude jeopardize the operation of this tour. Vacation travel insurance with a comprehensive plan that includes medical coverage in the case of emergency is highly recommended. Please call France by Design, LLC at 1-866-535-7702 for more information.

### Responsibility & Disclaimers of Liability

France by Design, LLC at 3223-D North Pleasantburg Drive, Box 135, Greenville, SC, 29609 is a CST # 2086085-40. France by Design, LLC's contact information is as follows: (864) 298-0004 or Toll-free at 1-866-535-7702 or Fax at (864) 335-8221 or email: [kristi@francebydesign.com](mailto:kristi@francebydesign.com). Since France by Design, LLC operates outside of the state of California, this seller of travel is not a participant in the California Travel Consumer Restitution Fund. California law requires certain sellers of travel to have a trust account or bond. France by Design, LLC has business client trust account # 0005126410826 at Branch Banking & Trust of South Carolina, 1533 Wade Hampton Boulevard, Greenville, SC 29609. This account is set up to protect consumer monies that are paid to France by Design, LLC for the travel products and services described in this land tour package.

France by Design, LLC, in good faith, is acting as an intermediary between travel suppliers & special tour featured speakers/instructors and their businesses & affiliates AND the individual tour participant for the purchases of travel-related products and services provided in the description of this land only tour package. In good faith, France by Design, LLC is planning all the components of this land tour with reputable travel industry suppliers and well-known featured speakers/instructors. France by Design, LLC has no control over any supplier or featured speaker/instructor and does not participate in running their businesses, their policies and procedures, or their terms and conditions. France by Design, LLC, its affiliates, its travel suppliers, and its special tour feature speakers/instructors and their businesses do not accept responsibility for losses or delays arising from sickness, pilferage, acts of terrorism, weather conditions, or acts of God. All such losses or expenses shall be borne by the tour participant. It is to be clearly understood that baggage is carried at the owner's risk entirely. Tour participants are discouraged from wearing and bringing jewelry of any significant monetary and/or sentimental value. Tour participants understand that any valuable electronic devices or cameras or any items of similar value are his/her own responsibility. France by Design, LLC, its affiliates, its travel suppliers, and its special tour featured speakers/instructors and their respective businesses are not liable for any damage or loss of the tour participant's possessions, monies, or travel documents such as airline tickets and passports.

All documents for tour services issued by France by Design, LLC are subject to the terms and conditions specified by France by Design, LLC and to the laws of the countries in which the services are supplied. If there are changes in the itinerary for reasons beyond the control of France by Design, LLC and/or its travel suppliers and special tour-featured speakers/instructors, arrangements for the provision of comparable services will be made. In the unlikely event that Kristi Wetzel, president of France by Design, LLC and tour director were to become physically unable to direct this tour due to a major injury, illness, death, and if her role is not filled by a suitable travel professional replacement, this land package tour would then be cancelled, and each tour participant would be entitled to a refund of all payments made to France by Design, LLC for this tour package under these circumstances. In the event of a catastrophic national or international event that would jeopardize the tour participant's reasonable safe passage of travel to and from the UK and/or travel within this land tour itinerary's destinations, France by Design, LLC and/or its representatives reserve the right to cancel the tour prior to departure. In such cases, all monies received in payment for this land tour, including the initial trip deposit, will be refunded without further obligation on the part of France by Design, LLC and/or its representatives.

The tour participant agrees on behalf of him/herself, his/her dependents, heirs, executors, administrators and assigns to abide by these stated terms and conditions. Legal proceedings against France by Design, LLC may be instituted only in a state of federal court located within the state of South Carolina. Any claim involved in such proceedings shall be decided in accordance with the laws of the state of South Carolina. No other person other than an authorized representative of France by Design, LLC, by document in writing, is authorized to vary, add, or waive any term or condition in regard to this special land tour program as described in detail in this document.



**RESERVATION AND DEPOSIT FORM**  
**First Payment**

**Tea Time Tour**  
**September 3—12, 2007**  
(10 days, 8 Nights)

**RESERVATION FORM**

Please accept this reservation for \_\_\_\_\_ person(s).

**CHECK THE OPTION WHICH APPLIES TO YOUR CHOICE OF DEPOSIT FOR THIS TOUR:**

- OPTION A: "EARLY BIRD"** Due on or before **MARCH 24, 2007** **AMOUNT:** \$400 USD per person
- OPTION B:** Due on or before **APRIL 14, 2007** **AMOUNT:** \$500 USD per person

Name \_\_\_\_\_  
 Address \_\_\_\_\_  
 City \_\_\_\_\_ State \_\_\_\_\_ Zip Code \_\_\_\_\_  
 Home Phone (\_\_\_\_) \_\_\_\_\_ Alternate Phone (\_\_\_\_) \_\_\_\_\_  
 E-mail address \_\_\_\_\_

\*Are you a U.S. citizen?  Yes  No \*Do you possess a valid passport?  Yes  No

\*Passport no./country/expiration date/date of birth \_\_\_\_\_

\*I have read all the Terms and Conditions in this land only tour document, and my signature below constitutes my agreement to them, including the payment schedule and cancellation penalties.

**Make checks payable to :**  
**France by Design, LLC**  
**CST # 2086085-40**  
**3223-D North Pleasantburg Drive, Box 135**  
**Greenville, SC 29609**  
**Phone: (864) 298-0004 \* Fax: (864) 335-8221**  
**Toll-Free US: 1-866-535-7702**

Signature \_\_\_\_\_

**Second and Final Payment**

**Tea Time Tour**  
**September 3—12, 2007**  
(10 days, 8 Nights)

**BALANCE DUE FORM:**

Please accept this balance due for \_\_\_\_\_ person(s).

<b>FINAL PAYMENT: Check which final payment applies</b>	<b>Due on or before <u>May 26, 2007</u></b>	<b>BALANCE DUE</b>
<input type="checkbox"/> Double occupancy rate		\$3650 USD per person
<input type="checkbox"/> Single occupancy rate:		\$4300 USD per person
<input type="checkbox"/> Double occupancy rate plus "Theater Tea" + Theater:		\$3840 USD per person
<input type="checkbox"/> Single occupancy rate plus "Theater Tea" + Theater:		\$4490 USD per person

Name \_\_\_\_\_  
 Address \_\_\_\_\_  
 City \_\_\_\_\_ State \_\_\_\_\_ Zip Code \_\_\_\_\_  
 Home Phone (\_\_\_\_) \_\_\_\_\_ Alternate Phone (\_\_\_\_) \_\_\_\_\_  
 E-mail address \_\_\_\_\_

\*Are you a U.S. citizen?  Yes  No \*Do you possess a valid passport?  Yes  No

\*Passport no./country/expiration date/date of birth \_\_\_\_\_

**Make checks payable to :**  
**France by Design, LLC**  
**CST # 2086085-40**  
**3223-D North Pleasantburg Drive, Box 135**  
**Greenville, SC 29609**  
**Phone: (864) 298-0004 \* Fax: (864) 335-8221**  
**Toll-Free US: 1-866-535-7702**

Photo by Patrick Cox



**Kristi Wetzel, President  
France by Design, LLC  
3223-D N. Pleasantburg Dr.  
Box 135  
Greenville, SC 29609  
Phone: (864) 298-0004  
Fax: (864) 335-8221**

### **About your guide:**

Kristi Wetzel, a native of Macon, Georgia, is a Southern gal with a global perspective. Since her childhood, she has been intrigued by opportunities to meet and interact with people from many diverse cultures. When her parents became medical missionaries in her teen years, she embraced the changes that came with learning a new language and living in two completely opposite countries — Switzerland and Chad, Africa. After a number of years of teaching in a private school in Greenville, SC, Kristi started France by Design in 1996. Kristi's mission is to provide her clients with personal experiences that deepen their knowledge of a culture's people and heritage. She has routinely invested the time to travel and meet many of the vendors and experts who are passionate about their country's history, art, landscapes, architecture, language, cuisine, and crafts. In 2005 Kristi earned the France Destination Specialist (DS) designation from The Travel Institute in Wellesley, MA, an in-depth study specifically designed for travel industry professionals and sponsored by the French Government Tourism Office.

In response to ever-increasing requests for similar travel experiences to England, Scotland, and Wales, Kristi has extended her research and private guide resources in the UK. This tea time tour has been created through her collaboration with British Heritage Tours of England.